

Technical data

Throughput capacity (kg/h)*

Steel

60 kg/h

Aluminium

48 kg/h

Other materials

On request

Cutter

9 Exchangeable cutting discs

Driving power

2,2 kW

Weight

ca. 350kg

Dimensions L x W x H

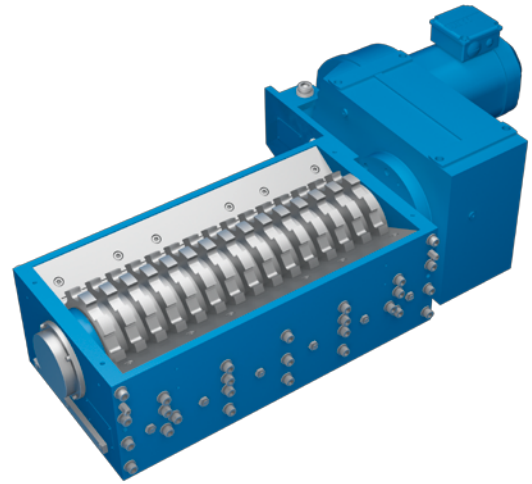
1260 x 380 x 335 mm

Shredder opening L x W

380 x 320 mm

*The specifications are approx. values, considerable variations are possible depending on the chip type. Throughput of other materials on inquiry.

Subject to technical changes



Technical Data

Throughput capacity (kg/h)*

Steel
100 kg/h

Aluminium
80 kg/h

Other materials
On request

Cutter
15 Exchangeable cutting discs

Driving power
3,0 kW

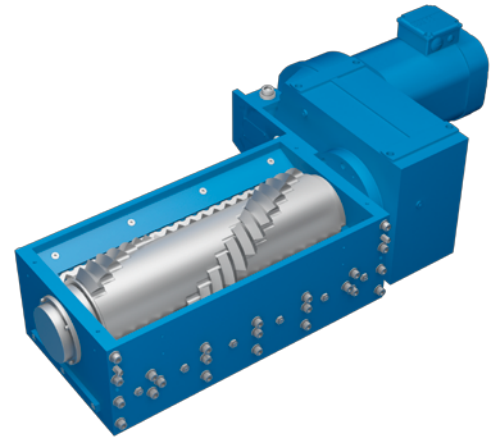
Weight
ca. 420 kg

Dimensions L x W x H
1248 x 678 x 330 mm

Shredder opening L x W
620 x 320 mm

*The specifications are approx. values, considerable variations are possible depending on the chip type. Throughput of other materials on inquiry.

Subject to technical changes



Technical data

Throughput capacity (kg/h)*

Steel
25 kg/h

Aluminium
20 kg/h

Other materials
On request

Cutter
19 Exchangeable cutting discs

Driving power
5,5 kW

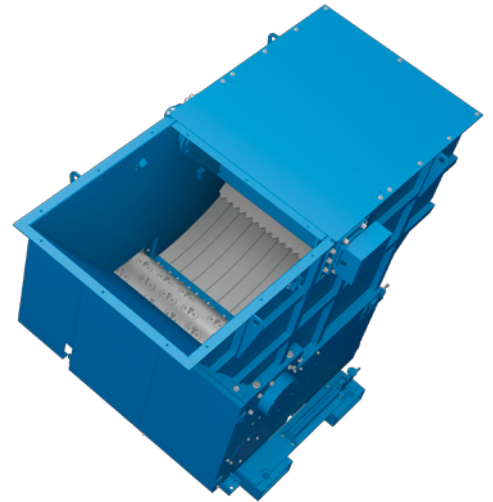
Weight
ca. 450 kg

Dimensions L x W x H
1322 x 678 x 335 mm

Shredder opening L x W
620 x 320 mm

*The specifications are approx. values, considerable variations are possible depending on the chip type. Throughput of other materials on inquiry.

Subject to technical changes



Technical data

Throughput capacity (kg/h)*

Steel

-

Aluminium

2000 kg/h

Other materials

On request

Cutter

Rotor (cutter shaft): 68 ea.

Stator (countercutters): 70 ea.

Driving power

30 kW

Weight

ca. 3800 kg

Dimensions L x W x H

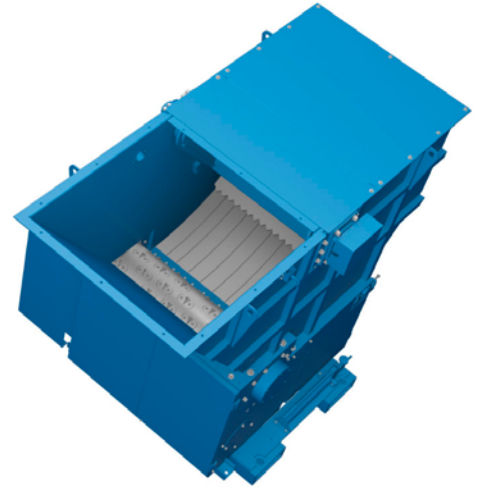
2605 x 1900 x 2100 mm

Shredder opening L x W

1000 x 1000 mm

*The specifications are approx. values, considerable variations are possible depending on the chip type. Throughput of other materials on inquiry.

Subject to technical changes



Technical data

Throughput capacity (kg/h)*

Steel

-

Aluminium

3000 kg/h

Other materials

On request

Cutter

Rotor (cutter shaft): 240 ea.

Stator (countercutters): 147 ea.

Driving power

2 x 30 kW

Weight

ca. 7500 kg

Dimensions L x W x H

2400 x 2850 x 2050 mm

Shredder opening L x W

720 x 1450 mm

*The specifications are approx. values, considerable variations are possible depending on the chip type. Throughput of other materials on inquiry.

Subject to technical changes