

Technical data

Throughput capacity

up to approx 100 kg/h

Driving power of screw conveyor

0,25 kW

Weight (net)

ca. 67,5 kg

Dimensions L x W x H

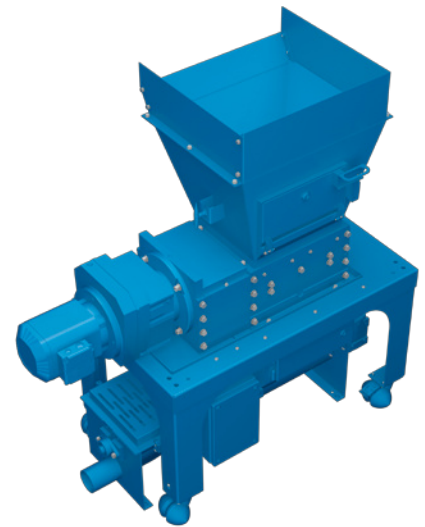
1250 x 465 x 360 mm

Feed opening L x W

405 x 300 mm

*The specifications are approx. values

Subject to technical changes



Technical data

Throughput capacity
up to 100 kg/h

Driving power of screw conveyor
0,25 kW

Integrable shredders
EZ4, EZ6, WZ4, WZ6, ZW300, ZW400

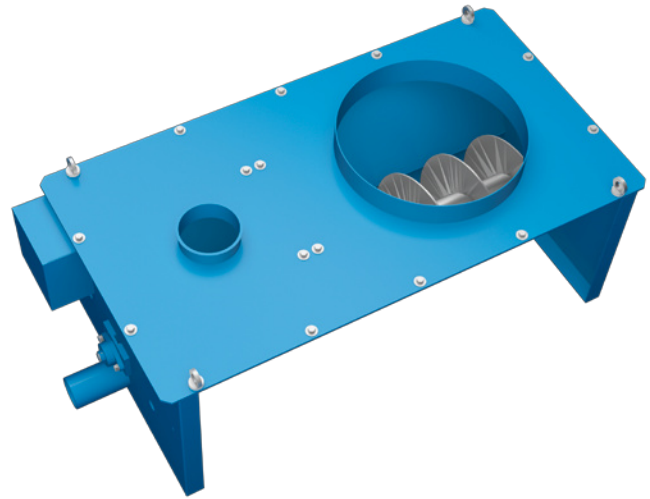
Level monitoring
by means of light barrier

Truck
portable

Hopper
individually tailored

*The specifications are approx. values

Subject to technical changes



Technical data

Throughput capacity

up to approx 2000 kg/h

Driving power of screw conveyor

0,25 kW

Weight (net)

ca. 172 kg

Dimensions L x W x H

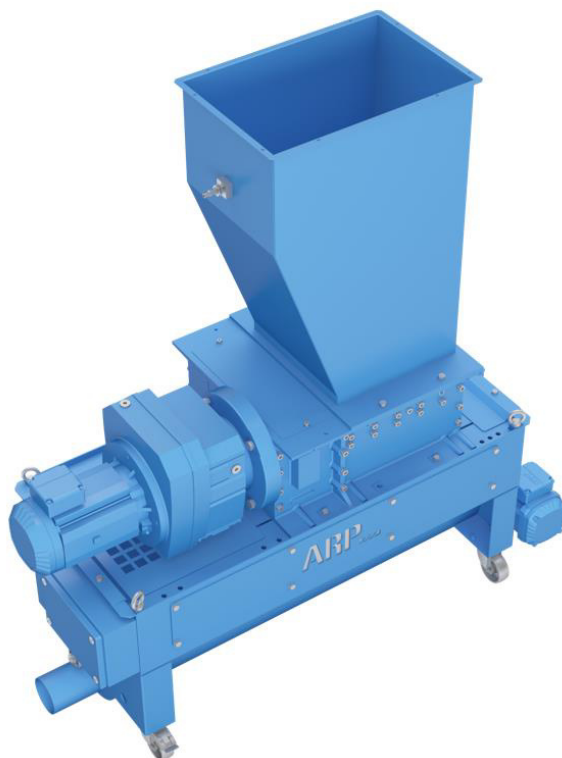
1645 x 740 x 490 mm

Feed opening L x W

variable up to max 760 x 640 mm

*The specifications are approx. values

Subject to technical changes

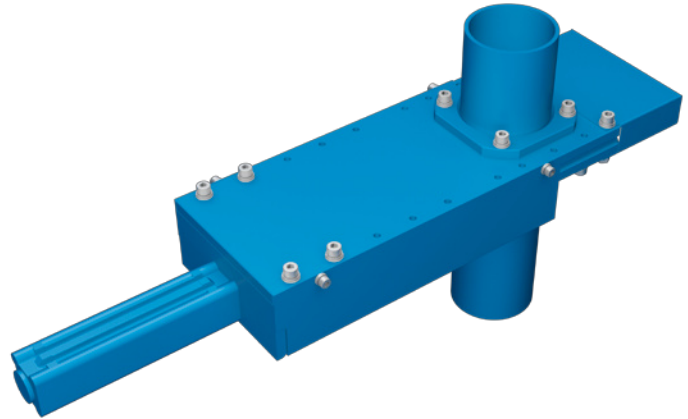


Technical Data

Type:	chip shredder with vacuum suction unit
Throughput * (chips)	up to 100 kg/h
Driving power of screw conveyor	0.55 kW
Suitable for following shredder types	EZ 4, EZ 6, WZ 6, ZW 300, ZW 400
Level monitoring	via laser and light barrier
Trolley	mobile
hopper	customized



*The specifications are approx. values, considerable variations are possible depending on the chip type. Throughput of other materials on inquiry. Subject to technical changes



Technical data

Site of operation

As a shut-off valve in the chip suction pipe system

Weight

ca. 20 kg

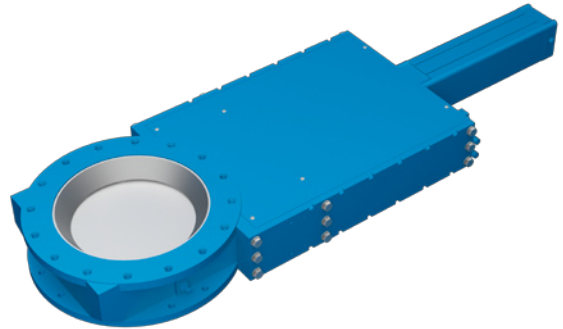
Dimensions L x W x H

790 x 230 x 332 mm

Outlet opening Ø

DN 80:	88,9 mm
DN 100:	114,3 mm

*Subject to technical changes



Technical data

Site of operation

As a suction unit below the separator or filter unit

Weight

155 kg

Dimensions L x W x H

1775 x 590 x 150 mm

Outlet opening Ø

DN 400: 406 mm

*Subject to technical changes