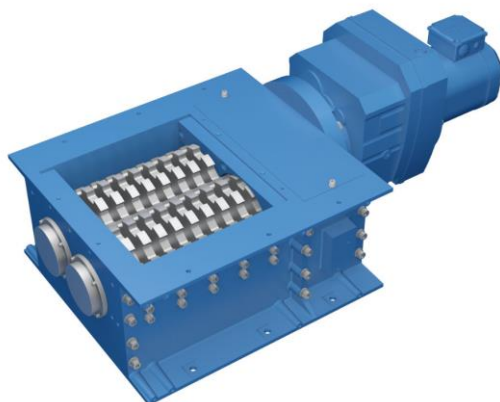


Technical Data

Type:	Shredder	
Throughput capacity*	Steel	60 kg/h
	Aluminium	30 kg/h
	Other materials	on request
Driving power	1,5 kW	
Weight	approx. 350 kg	
Dimensions L x W x H	1100 x 420 x 330 mm	
Shredder opening L x W	240 x 330 mm	
Knives	18 exchangeable knives	



*The specifications are approx. values, considerable variations are possible depending on the chip type. Throughput of other materials on inquiry. Subject to technical changes



Technical Data

Type:	Shredder	
Throughput capacity*	Steel	100 kg/h
	Aluminium	75 kg/h
	Other materials	on request
Driving power	3,0 - 4,0 kW	
Weight	approx. 530 kg	
Dimensions L x W x H	1350 x 600 x 410 mm	
Shredder opening L x W	330 x 400 mm	
Knives	18 exchangeable knives	



*The specifications are approx. values, considerable variations are possible depending on the chip type. Throughput of other materials on inquiry. Subject to technical changes



Technical Data

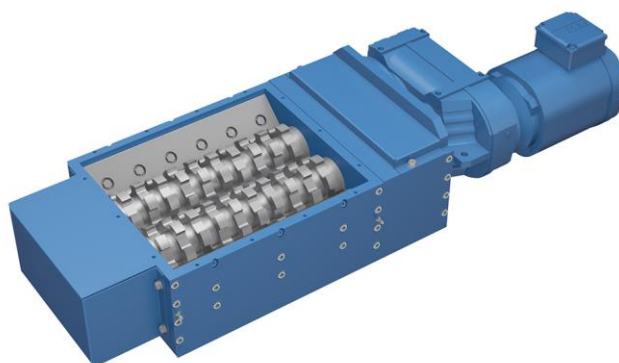
Type:	Shredder	
Throughput capacity*	Steel	150 kg/h
	Aluminium	110 kg/h
	Other materials	on request
Driving power	3 - 4 kW	
Weight	approx. 650 kg	
Dimensions L x W x H	1570 x 570 x 410 mm	
Shredder opening L x W	600 x 400 mm	
Knives	28 exchangeable knives	



*The specifications are approx. values, considerable variations are possible depending on the chip type. Throughput of other materials on inquiry. Subject to technical changes



Product name: ZWR 402 (Hig speed shredder)

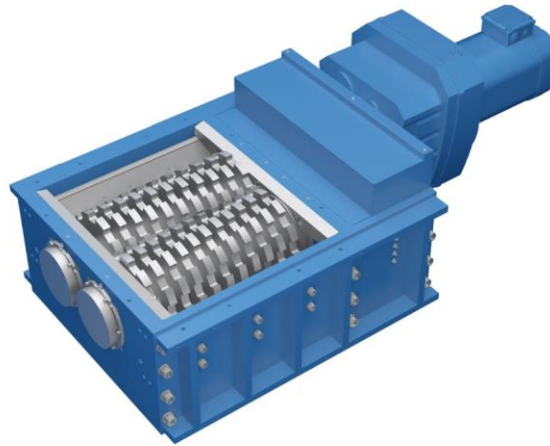


Technical Data

Type:	Shredder	
Throughput capacity*	Steel	80 kg/h
	Aluminium	110 kg/h
	Other materials	on request
Driving power	2,2 - 3,0 kW	
Weight	approx. 260 kg	
Dimensions L x W x H	1280 x 400 x 290 mm	
Shredder opening L x W	420 x 360 mm	
Knives	20 exchangeable knives	



*The specifications are approx. values, considerable variations are possible depending on the chip type. Throughput of other materials on inquiry. Subject to technical changes



Technical Data

Type:	Shredder	
Throughput capacity*	Steel	400 kg/h
	Aluminium	250 kg/h
	Other materials	on request
Driving power	5,5 - 7,5 kW	
Weight	approx. 850 kg, weight of options on request	
Dimensions L x W x H	1600 x 730 x 480 mm	
Shredder opening L x W	440 x 580 mm	
Knives	22/24 exchangeable knives	

Option friction clutch

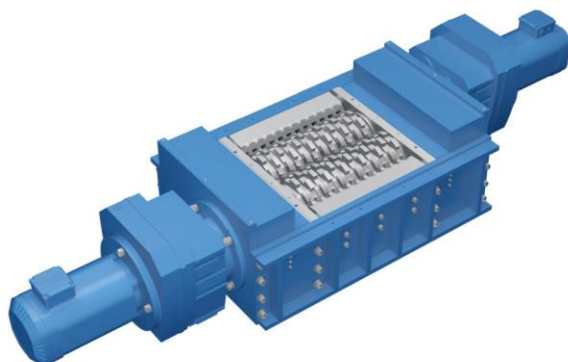
If massive impurities are present in the shredding material, the friction clutch reinforces the protection of the cutter against damage.

Option solid part ejection

Solid parts that have been fed in are automatically removed from the cutting unit. The cutting unit continues its work independently.



*The specifications are approx. values, considerable variations are possible depending on the chip type. Throughput of other materials on inquiry. Subject to technical changes

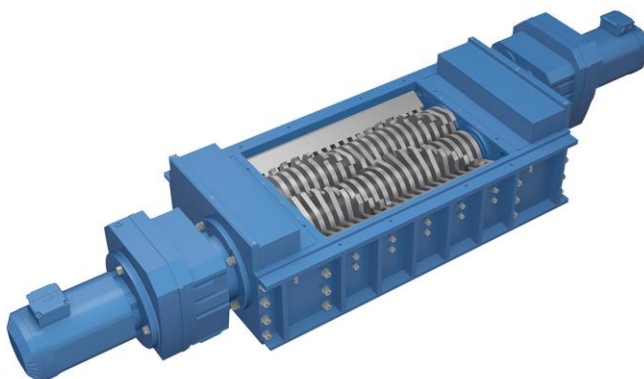


Technical Data

Type:	Shredder	
Throughput capacity*	Steel	600 kg/h
	Aluminium	360 kg/h
	Other materials	on request
Driving power	5,5 - 7,5 kW	
Weight	approx. 1500 kg	
Dimensions L x W x H	2600 x 730 x 480 mm	
Shredder opening L x W	400 x 580 mm	
Knives	22/24 exchangeable knives	



*The specifications are approx. values, considerable variations are possible depending on the chip type. Throughput of other materials on inquiry. Subject to technical changes

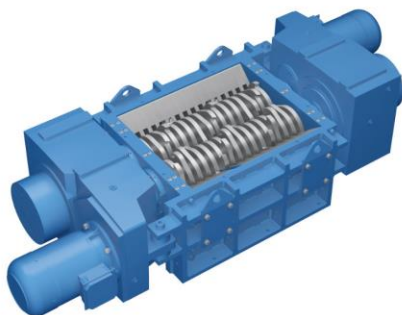


Technical Data

Type:	Shredder	
Throughput capacity*	Steel	1000 kg/h
	Aluminium	600 kg/h
	Other materials	on request
Driving power	5,5 - 7,5 kW	
Weight	approx. 1700 kg	
Dimensions L x W x H	2950 x 730 x 480 mm	
Shredder opening L x W	830 x 580 mm	
Knives	40 exchangeable knives	



*The specifications are approx. values, considerable variations are possible depending on the chip type. Throughput of other materials on inquiry. Subject to technical changes

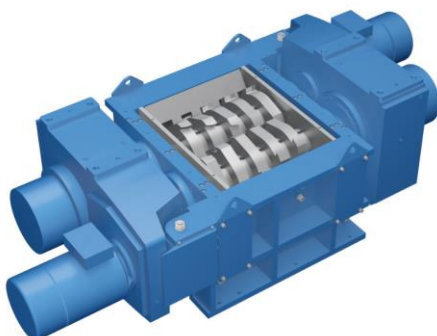


Technical Data

Type:	Shredder	
Throughput capacity*	Steel	2000 kg/h
	Aluminium	1500 kg/h
	Other materials	on request
Driving power	15,0 kW	
Weight	approx. 4000 kg	
Dimensions L x W x H	2950 x 1080 x 670 mm	
Shredder opening L x W	890 x 750 mm	
Knives	22 exchangeable knives	



*The specifications are approx. values, considerable variations are possible depending on the chip type. Throughput of other materials on inquiry. Subject to technical changes

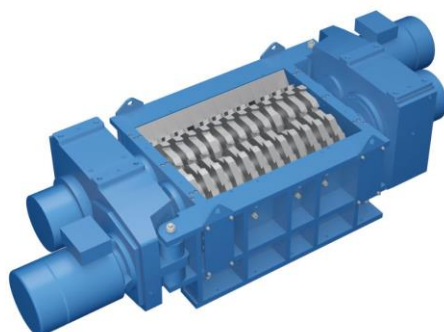


Technical Data

Type:	Shredder	
Throughput capacity*	Steel	on request
	Aluminium	on request
	Other materials	on request
Driving power	37,0 kW	
Weight	approx. 8000 kg	
Dimensions L x W x H	3850 x 1500 x 1020 mm	
Shredder opening L x W	830 x 1040 mm	
Knives	10 exchangeable knives	



*The specifications are approx. values, considerable variations are possible depending on the chip type. Throughput of other materials on inquiry. Subject to technical changes



Technical Data

Type:	Shredder	
Throughput capacity*	Steel	on request
	Aluminium	on request
	Other materials	on request
Driving power	45,0 - 55,0 kW	
Weight	approx. 12000 kg	
Dimensions L x W x H	4320 x 1500 x 1020 mm	
Shredder opening L x W	1300 x 1040 mm	
Knives	16 exchangeable knives	



*The specifications are approx. values, considerable variations are possible depending on the chip type. Throughput of other materials on inquiry. Subject to technical changes